

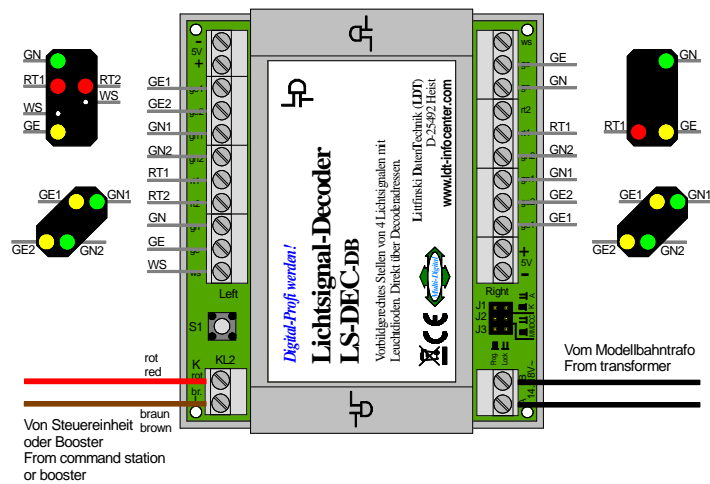
Controlling DB-Light signals with the Light-Signal Decoder LS-DEC-DB via light-signal symbols on the track control of the Central Station 3 (plus)

This description is not replacing the operation manual of the LS-DEC-DB. It shall inform about the properties of the Central Station 3 (CS3) for programming and controlling DB-Light signals via the light signal symbols of the digital command station with the Light-Signal Decoder LS-DEC-DB.

Proceed in any case in accordance with the description of the LS-DEC-DB operation manual and consider the below mentioned properties of the CS3.

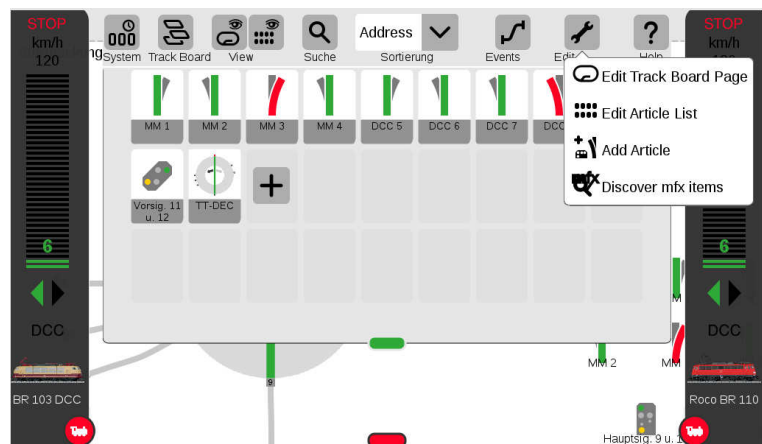
1. Connecting Light signals to the LS-DEC-DB:

For example will be one Main- and one Advance-signal connected to the left clamp bar of the Light-Signal Decoder LS-DEC-DB. This will be described at the operation manual for the decoder and will be shown at the opposite sample connection.

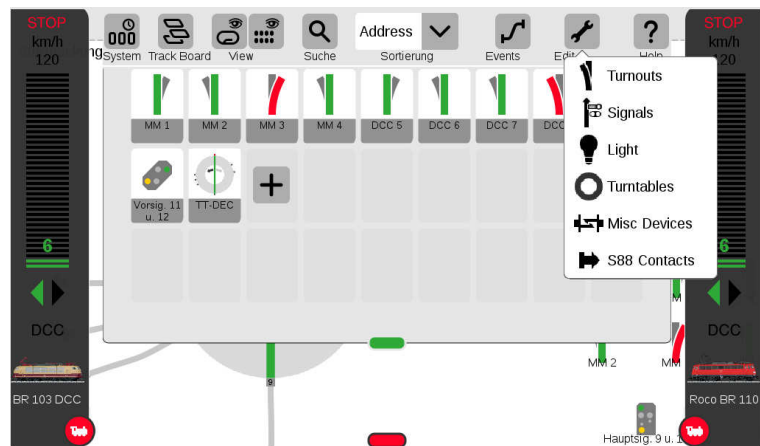


2. Apply Light signals at the Central Station 3 (plus):

Click onto the switch-button "Edit" and select "Add Article" and ...



...by following "Signals".



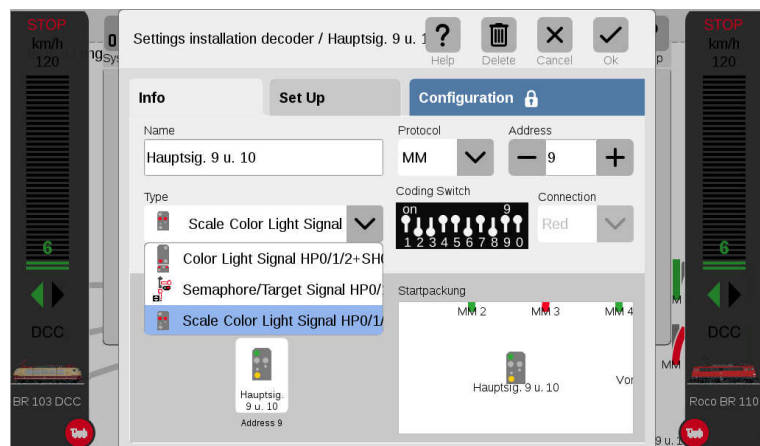
Under "Type" select "Scale Color Light Signal HP0/1/2+SH0/" for the main signal.

Under "Name" select e.g. "Hauptsig. 9 u. 10".

Under "Protocol" select "MM" for the Märklin-Motorola- or "DCC" for the DCC-Data format. Suitable to the data format "MM" insert the plug-in jumper J2 at the LS-DEC-DB. For the format "DCC" remove the jumper.

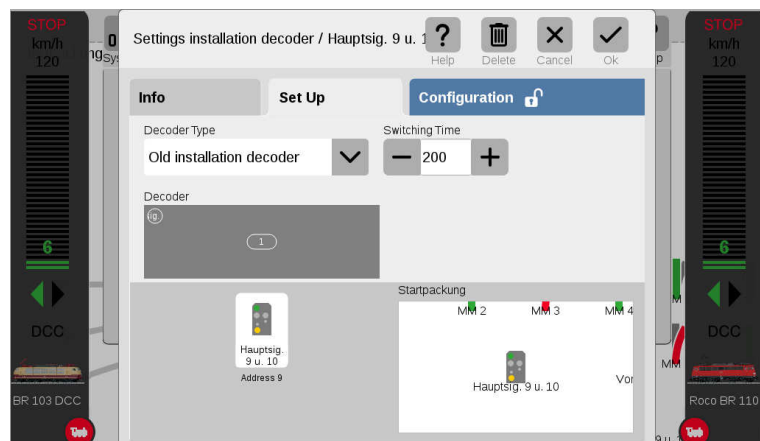
For the left clamp bar can be as valid four-fold address-block e.g. the address-group 9 to 12 selected.

The main-signal receives therefore under "Address" the 9. The second required address "10" will be automatically assigned by the Central Station 3.



The sector "Set Up" will remain at the recommended standard settings.

It is not required to attend to the sector "Configuration".

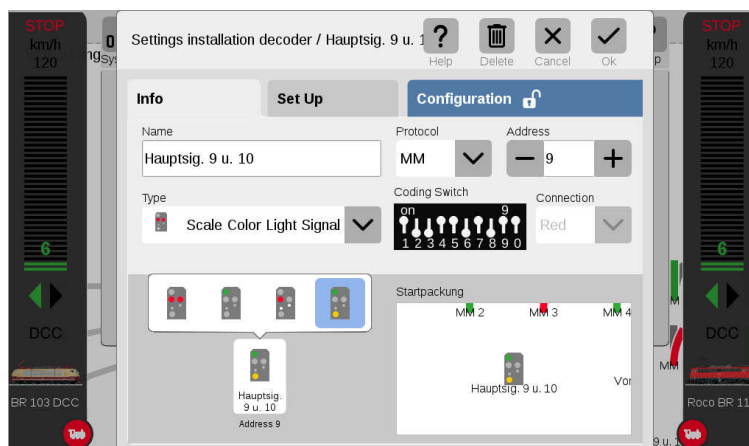


With click on the light signal symbol at the section "Info" (at left bottom) there will be three possible signal images displayed above the symbol.

For programming the decoder address you can apply those adjustments by clicking onto one of the signal aspects. The Central Station 3 will send an appropriate switch command via the address 9 or 10 and the Light-Signal Decoder recognizes if it is within the program mode acc. to the operation manual and will assign the correct address block from 9 to 12 to the left clamp bar.

Important is that the CS 3 will be not in "STOP" mode. It shall transmit the switch commands via the central track connection.

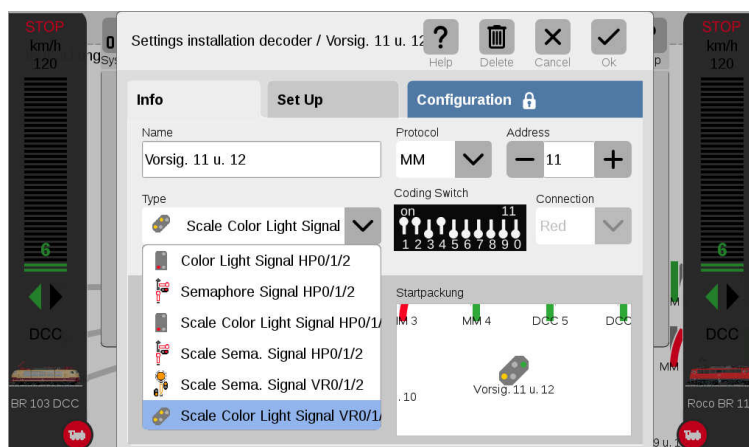
If the decoder has confirmed the programming with a faster flashing (see at the operation manual) the adjustments have to be confirmed with "Ok". The process of this section will be abandoned.



To control as well the advance signal which has been as well connected to the left clamp bar of the LS-DEC-DB with the Central Station 3 you have to click again onto the button "Edit" and select then "Add Articles" following by "Signals".

As "Type" select the "Scale Color Light Signal VR0/1/2" and the "Address" "11".

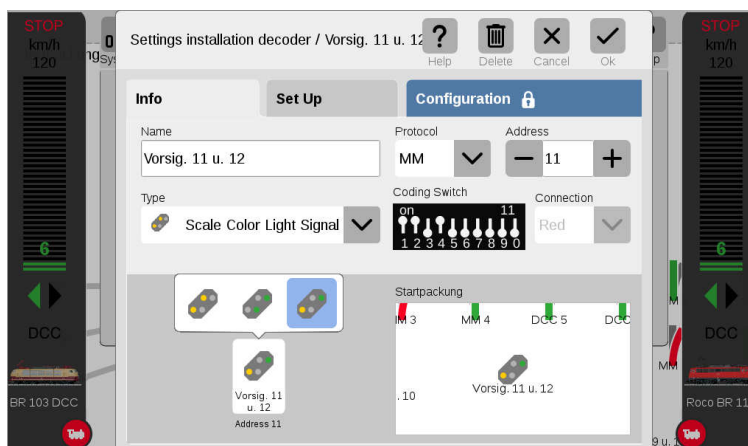
A renewed programming of the LS-DEC-DB has not to be carried out because the decoder recognizes already the address section 9 to 12 of the left clamp bar.



With click on the light signal symbol at the section "Info" (at left bottom) there will be three possible signal images displayed above the symbol.

Click now successively onto the signal images. The Light-Signal Decoder LS-DEC-DB will appropriate the position of the connected advance signal onto the left clamp bar.

Confirm now the adjustments with "OK". The process of this section will be abandoned.



Valid for the Central Station 3 (plus) with Firmware 1.3.3.1
 Subject to technical changes and errors.
 © 12/2018 by LDT
 Märklin and Motorola are registered trademarks.