

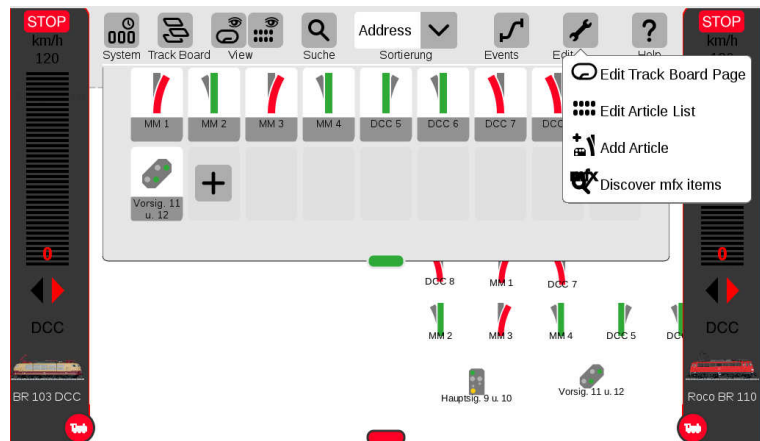
## Control of the Märklin Turntable 7286 with the Turntable-Decoder TT-DEC via the turntable symbol at the track control of the Central Station 3 (plus)

This description does not replace the instruction manual for the Turntable-Decoder TT-DEC. This description shall identify the special features for the control of the Märklin Turntable 7286. It shall indicate some special features for the control of the Märklin Turntable 7286 via the turntable symbol of the Central Station 3 and via the TT-DEC.

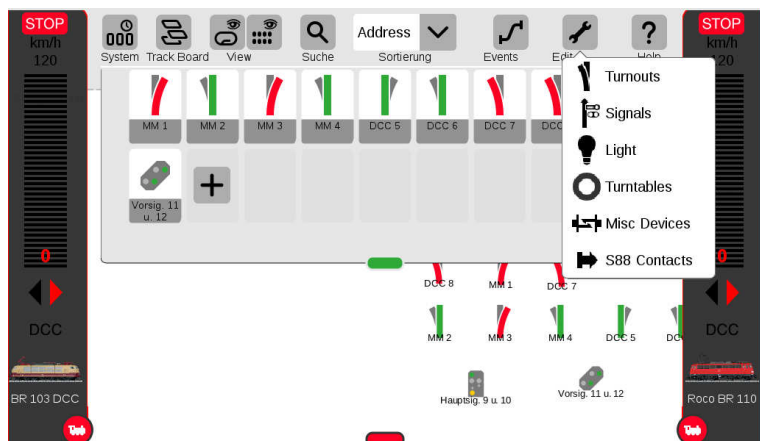
In any case please proceed as described within the instruction manual of the TT-DEC and attend to the below listed specific features.

### 1. Install a Turntable at the Central Station 3 (plus):

Click on the button “Edit” and select “Add Article” and ...



... then select “Turntables”.



At the section “Info” you can select “Name” and assign e.g. “TT-DEC”.

Under “Address” please register “209” or “225” as described at the instruction manual for the Turntable Decoder TT-DEC at the section 4.1.

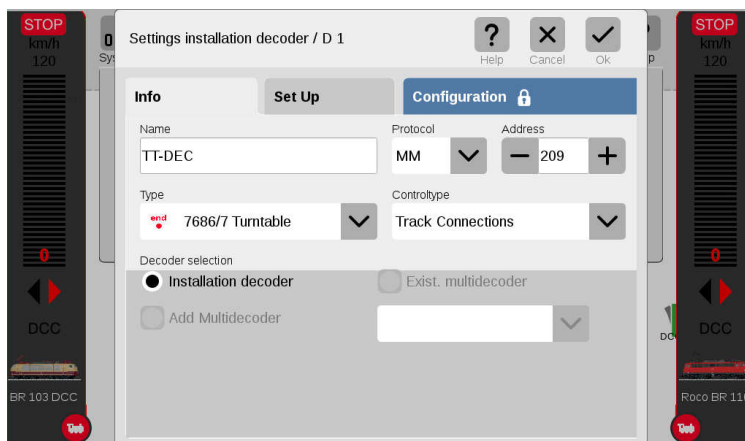
For the “Protocol” shall be the data format “MM” (Märklin-Motorola) determined.

Under “Type” please select “7686/7 Turntable”.

At the field “Controltype” select “Track Connections”.

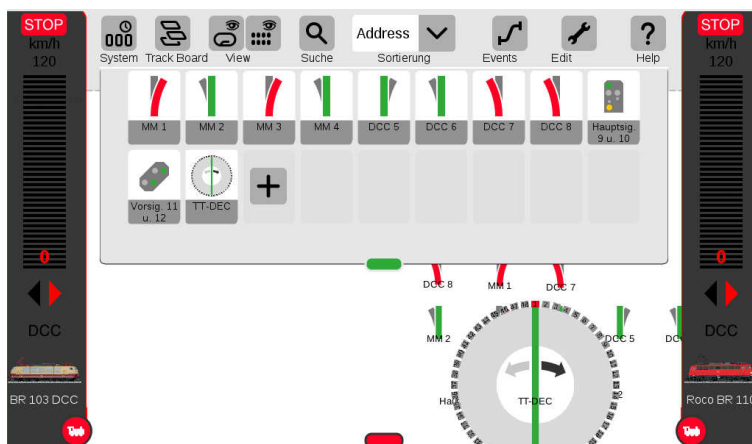
At “Decoder selection” is it not required to change the setting “Installation decoder”.

Subsequently confirm the setting with “OK”.

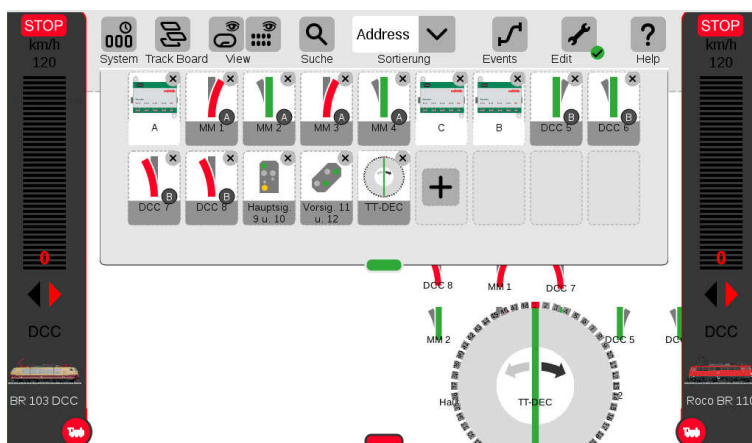


The article list has now been extended by the turntable symbol.

For further settings please click onto the button “Edit” and the menu item “Edit Article List”.



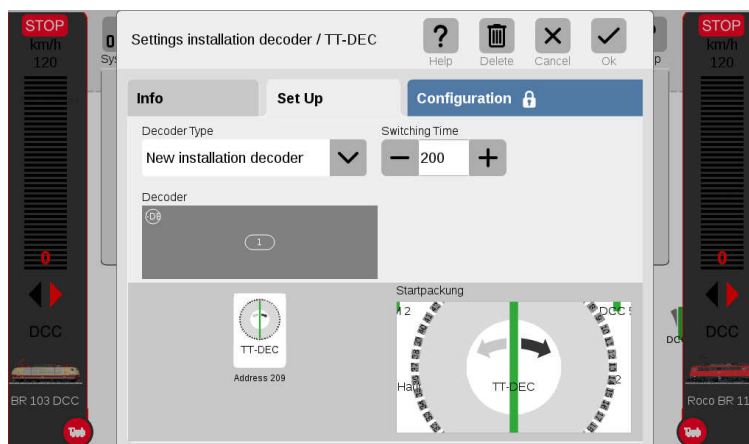
Click now onto the turntable symbol.



At the section “Set Up” please select for “Decoder Type” “New installation decoder”.

The pre-adjusted “Switching Time” of 200 has not to be changed.

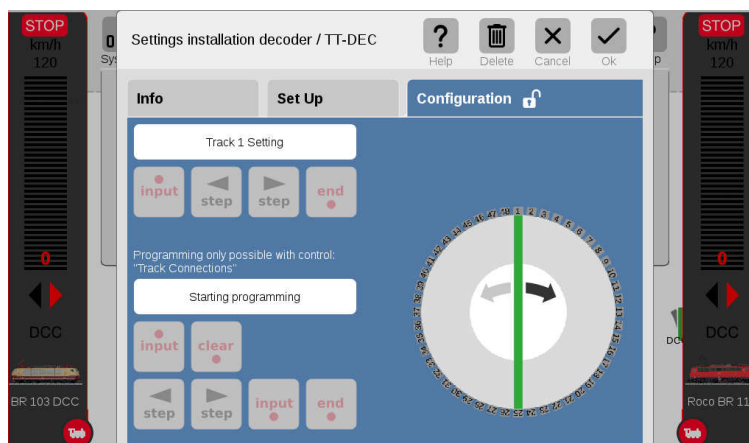
Confirm the settings with “Ok”. The process of editing the turntable section will now be left.



## 2. Programming the basic-address and data-format for the Turntable-Decoder TT-DEC:

Click on the button “Edit” and on the menu “Edit Article List” and then on the turntable symbol. Select now the section “Configuration”.

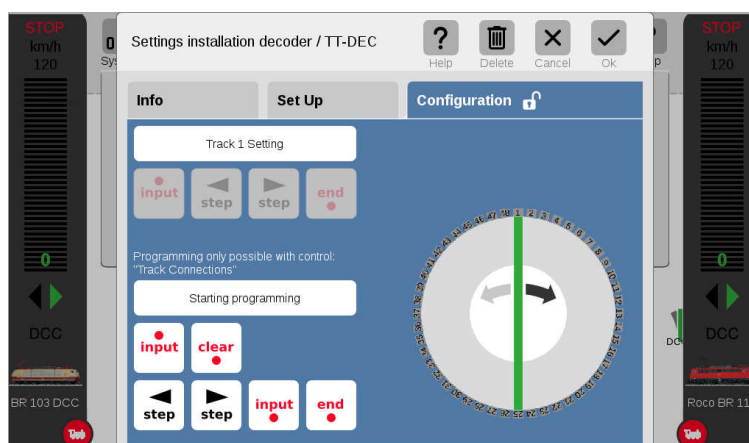
For programming the basic address and the data format (chapter 4.1. of the TT-DEC Instruction Manual), is the command `>turn direction<` or `>preselection of turn direction<` not available at the Central Station 3.



Alternative can be the command `>clear<` used.

The switch button “clear” will be active by clicking onto the button “Starting programming”.

Activate during the programming process of the basic address and the data format several times the key “clear” at the CS3 until the yellow LED of the TT-DEC will stop flashing and the programming process will be stopped.

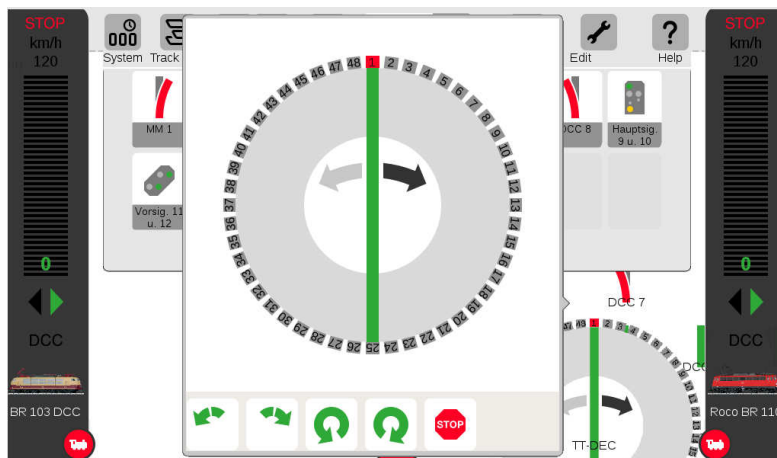


Leave now the adjustment of the section turntable by clicking onto the button “Ok”.

### 3. Adjusting turning speed and control cycle:

By clicking onto the turntable symbol at the Track Board will open a window with a large symbol and the command keys (from left to right) >Step<, >Turn< (each a key for anti-clockwise and clockwise) and >Stop<.

With this image will be the control timing adjustment via the command >turn< according to the TT-DEC Instruction Manual chapter 4.2 performed.



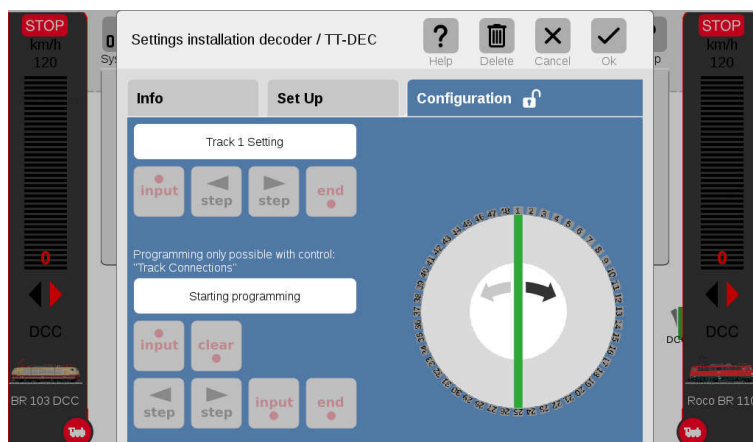
### 4. Programming Track connections:

For the programming of track connections shall be the turntable symbol at the track image not connected to the rails.

Before you will start with programming please turn the bridge manually into the reference position (track 1), with the little cabin on the right side. For this procedure switch-off the supply voltage for the turntable-decoder and turn the bridge by hand into the reference position by use of the small lever located opposite the small cabin.

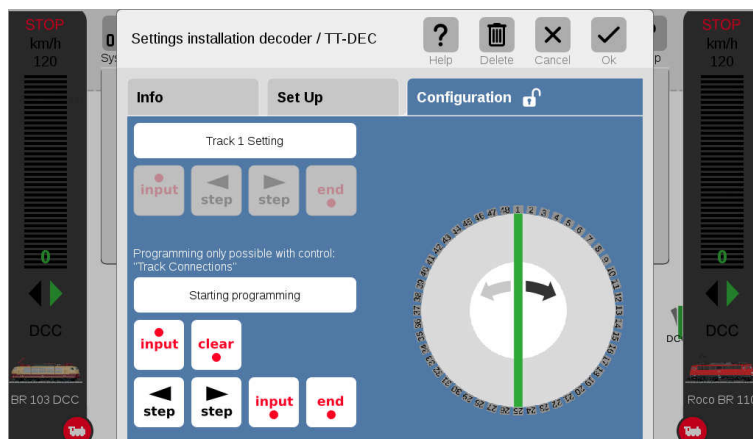
Following switch-on the supply voltage for the TT-DEC.

Click now on the button "Edit" and on the menu point "Edit Article List" and then onto the turntable symbol. Select now the section "Configuration".



Click now onto the button "Starting programming".

Now are the command keys >input<, >clear<, >step< at anti-clockwise, >step< at clockwise and >end< available for programming the track connections.



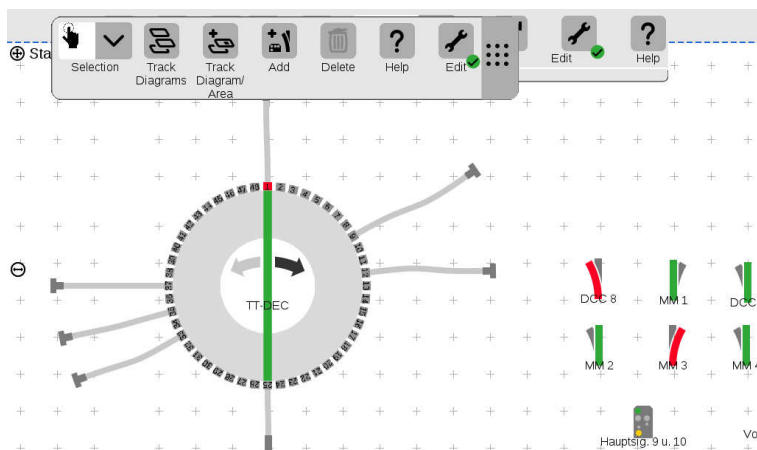
Perform now clockwise with the programming of the available track connections as described at chapter 4.3 of the TT-DEC manual.

If the last track connection has been programmed with the command >input<, then shall follow the command >end< to finalize the programming.

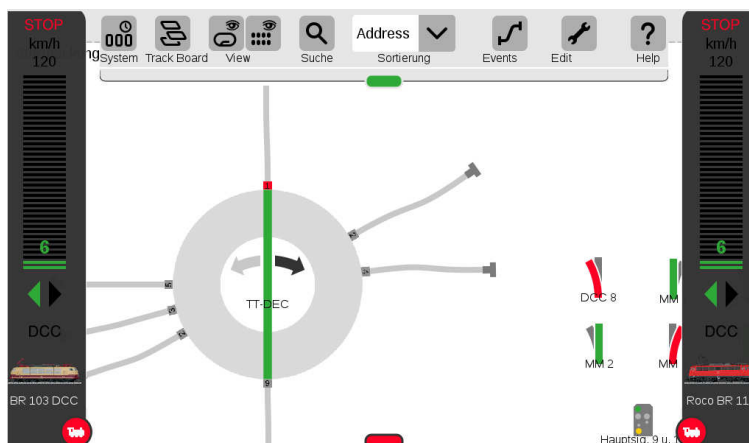
If all track connection have been appropriate considered, the bridge will return automatically to the reference track (1).

Leave now the section article processing with "Ok".

Change now to the processing of the track diagrams and position the available and programmed track connections around the turntable symbol.



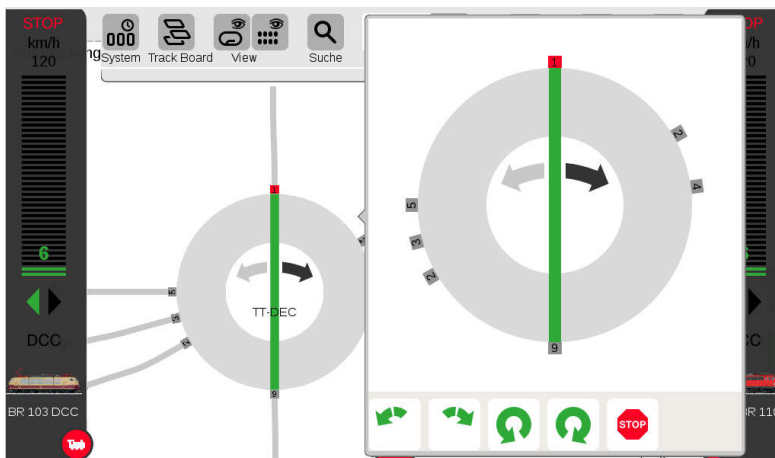
As soon as you will leave the processing mode of the track diagram, the Central Station 3 will number the track connections clockwise in the sequence as you have programmed the track connection at the turntable-decoder.



## 5. Turntable in operation:

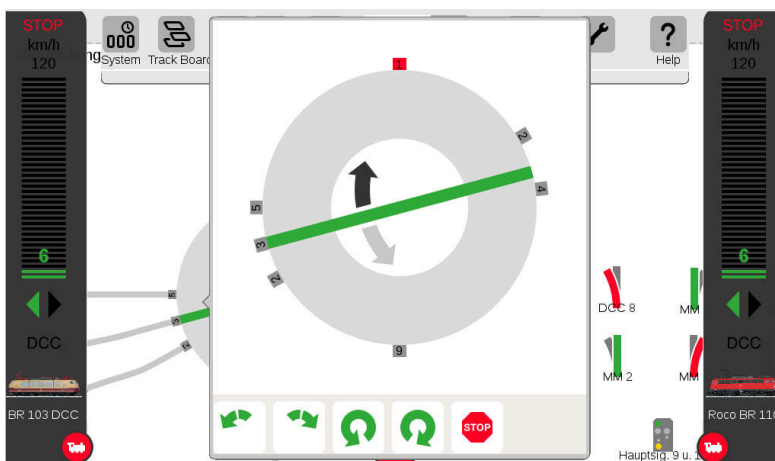
By clicking onto the turntable symbol at the Track Board will be open a window with a large symbol and the command keys (from left to right) >Step<, >Turn< (each a key for anti-clockwise and clockwise) and >Stop<.

With this image will be the Turntable 7286 with the Turntable-Decoder TT-DEC controlled.



By clicking onto the switch button >Step< at the anti- or clockwise direction and the turntable bridge will move by one track connection into the selected turning direction.

For selecting directly a track connection is only a click onto the number of an actual existing track connection required.



A click onto the switch button >Turn< at the anti- or clockwise direction will turn the bridge of the turntable by 180 degree into the selected turning direction.

The Turntable-Decoder TT-DEC will disregard the switch button >Stop<.

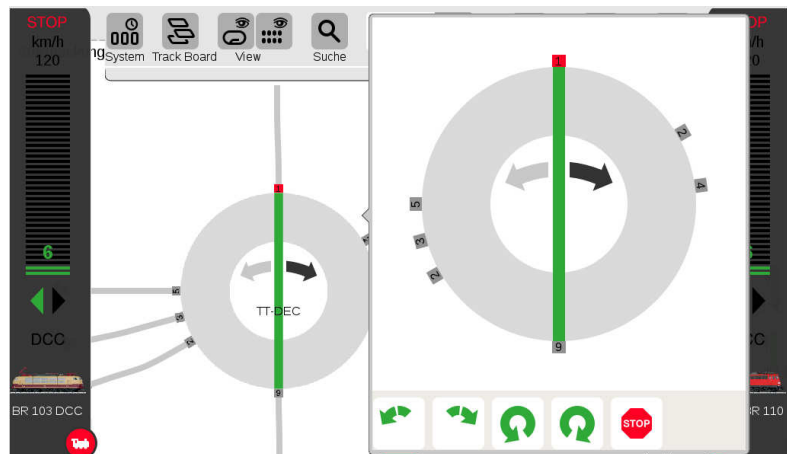
The Central Station 3 memorizes not the last position of the turntable before shutdown. The bridge will always start in the reference position. To prevent the synchronization of the bridge position by each new start of the CS 3, is it recommended to turn the bridge of the turntable into the reference position before shutdown of the central unit.

## 6. Synchronizing the Reference Track:

If the display of the bridge position on the turntable symbol of the Central Station 3 does not comply to the actual position of the bridge is it not possible to synchronize the bridge position as described at the Instruction Manual of the TT-DEC within the chapter 4.5. The reason is the missing of the command >Turning direction< at the Central Station 3.

Proceed as follows:

1. Turn the bridge via the switch buttons >Step< anti-clockwise into the position where all three LED of the TT-DEC will glow.



2. Switch off the Turntable-Decoder TT-DEC off and interrupt the power supply.
3. Turn now the bridge manually by hand into the reference position by use of the small lever on the bridge opposite the little bridge-housing.
4. Select now the reference position on the turntable symbol of the Central Station 3 (track 1 with the little bridge-house into the correct position).
5. Switch-on the power supply for the TT-DEC. To identify that the bridge will be in reference position all three LED of the TT-DEC will glow.

The synchronizing process has now been completed. The bridge will turn the track connections in conformity to the turntable symbol of the Central Station 3.

Valid for the Central Station 3 (plus) with Firmware 1.3.3.1  
Subject to technical changes and errors.

© 10/2018 by LDT

Märklin and Motorola are registered trademarks.